

North Carolina Supplemental Retirement Plans GoalMaker Review

March 2013



Jay Love, CFA

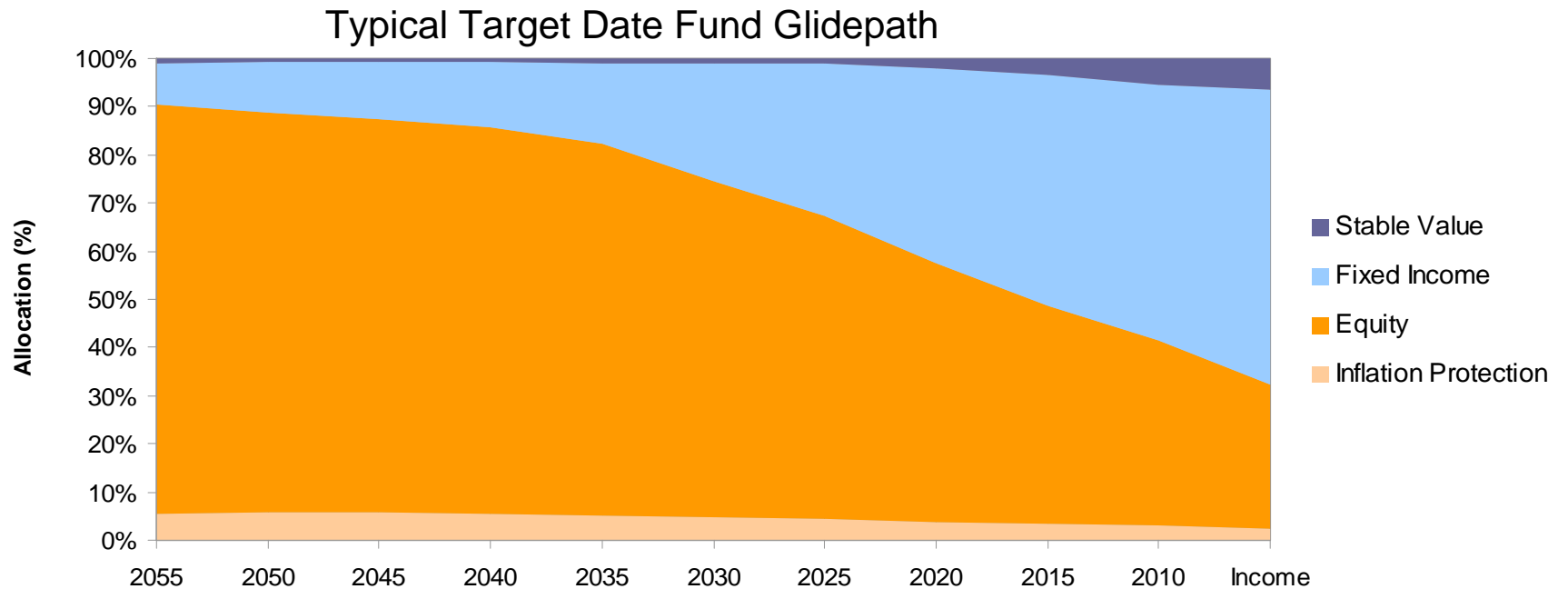
Agenda

- Glidepath Design
 - “To Retirement” vs. “Through Retirement”
- Phase I Proposal
 - Initial GoalMaker Enhancements
 - Implementing Phase I
- Phase II
 - Further Enhancements in Process

“To Retirement” vs. “Through Retirement”



Automatic asset allocation glidepath to retirement

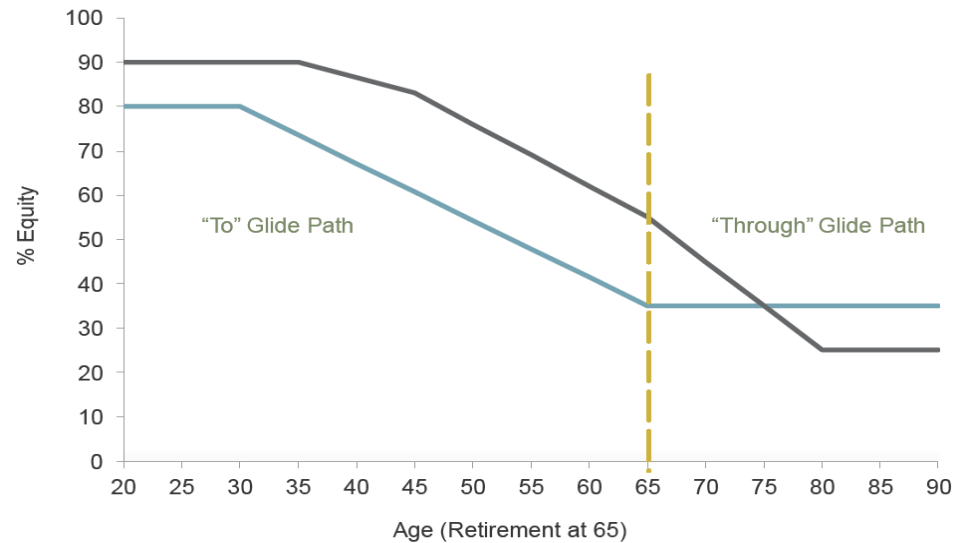


	2055	2050	2045	2040	2035	2030	2025	2020	2015	2010	Income
Expected Return	7.54%	7.22%	7.18%	7.13%	7.03%	6.81%	6.56%	6.22%	5.87%	5.57%	5.18%
Expected Risk	17.60%	16.93%	16.72%	16.40%	15.76%	14.40%	13.03%	11.31%	9.75%	8.51%	7.13%
Worst Case: 1 Yr, 2.5% Prob	-27.67%	-26.65%	-26.25%	-25.67%	-24.48%	-22.00%	-19.50%	-16.41%	-13.62%	-11.45%	-9.08%

“To retirement” vs. “through retirement”

- The “to” versus “through” distinction centers around how a glidepath (i.e., the evolving mix of equity and fixed income) should be designed once a target date fund reaches the target year of an individual’s retirement
- “To retirement” funds:
 - Designed primarily to build savings up to an individual’s target retirement date
 - Generally have more conservative allocations to equity (or other risky assets) at an individual’s target retirement date, typically with a flat or static allocation during later retirement years
 - Anticipates that participants withdraw all funds at retirement
- “Through retirement” funds:
 - Designed to help investors save through retirement, based on the philosophy that at age 65, an individual still has at least 20 years (or more) of life expectancy
 - Because of increased longevity, investors need their accumulated balances to last them long after retirement
 - Generally have higher allocations to equity (or other risky assets) at an individual’s target retirement date, with a declining equity allocation (i.e., equity exposure roll down) for a number of years post-retirement
 - Anticipates that participants remain in plan after retirement
- Large plan sponsors typically offer a “through retirement” glidepath
 - Examples: City of New York (custom), State of Ohio (custom), State of Texas (mutual funds), State of California (custom), State of Mississippi (mutual funds)

“To retirement” vs. “through retirement”



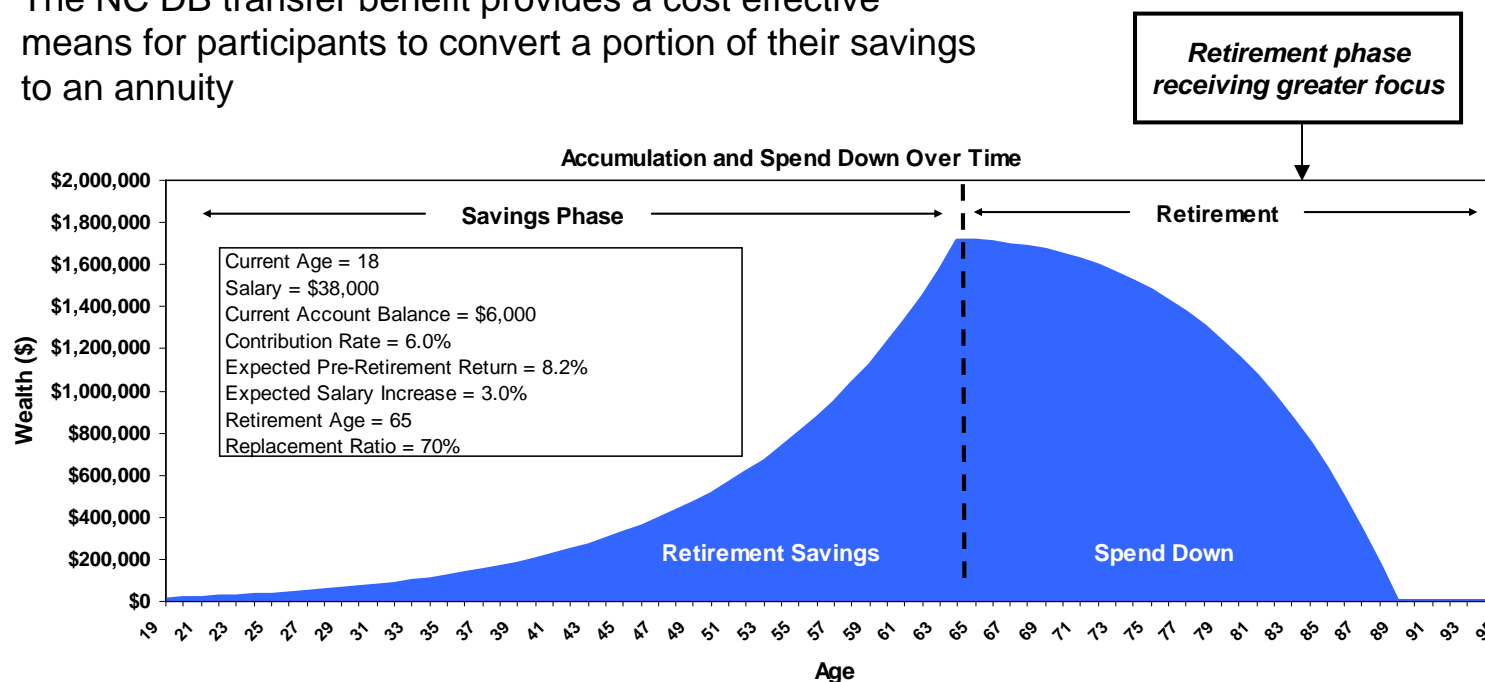
Objectives / Constraints	Equity minimized at retirement (“To” philosophy)	Equity minimized years into retirement (“Through” philosophy)
Accumulation	Focus on accumulating a high probability minimum target balance at retirement	Focus on building a high median expected balance to sustain spending in retirement
Risk budget and participant experience	Smooth the ride: trade potential return for lower volatility especially near and in retirement	Embrace a bumpier ride: accept higher volatility for higher return potential during work and early retirement
Retirement preparation	Focus on asset preservation and managing sequential risk approaching retirement	Focus on building and sustaining spending capacity throughout retirement
Advice preparation	Reduce likelihood of bad outcomes late in employment in preparation for de-accumulation and the potential help of a professional	Embed retirement investment advice in target date portfolios; whether assets remain in-plan or are rolled to an IRA should not impact allocation decision
Annuitization option	Prepare participants for possible total or partial annuitization	Prepare participants for systematic withdrawal

Source: Defined Contribution Institutional Investment Association, 2012

“To retirement” vs. “through retirement” DC spend down: The next big challenge

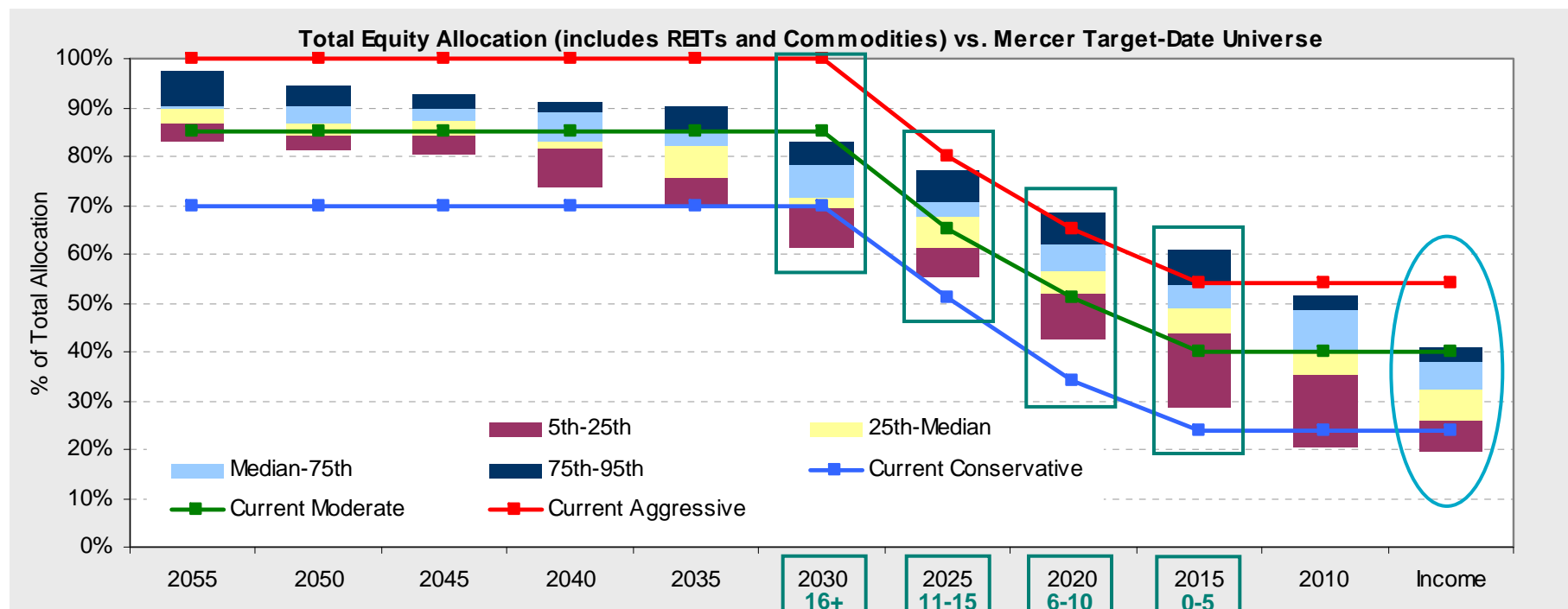
- Historically, sponsors focused on wealth accumulation and retirement readiness
- Sponsor focus is now shifting to the drawdown of assets – challenges include:
 - Addressing longevity, inflation and market risks
 - Providing education and tools to help participants plan and manage retirement
 - Understanding and evaluating the available product solutions
 - The NC DB transfer benefit provides a cost effective means for participants to convert a portion of their savings to an annuity

What is *spend down*?
The process of drawing down DC plan assets for purposes of providing income and meeting expenses in retirement



“To retirement” vs. “through retirement”

Current NCSRP glidepath: Hybrid to/through retirement construction



Mercer Target-Date Universe based on Mercer Third Quarter 2012 Target Date Fund Survey and includes 35 off-the-shelf target-date strategies.

- Reallocation begins at 16 years to retirement (approximately year 2030), in 5-year increments
- “To retirement” glidepath, but with “through retirement” allocation
 - Equity exposure at retirement is appropriate for a 10+ year horizon
 - No further equity exposure roll-down post-retirement
 - Allocation will become too aggressive after retirement

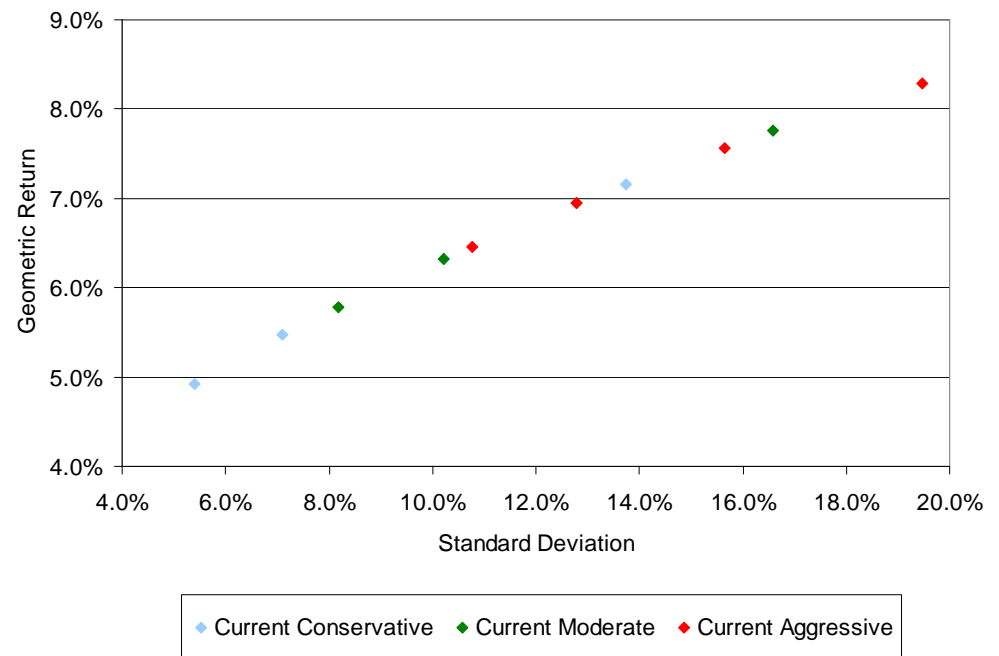
The background features a dark blue header section at the top. Below it, the page is filled with three horizontal, wavy bands of different shades of blue and teal. The top band is a medium-dark teal, the middle band is a lightest, almost white-blue, and the bottom band is a vibrant, bright teal. The waves in the bands flow from left to right, creating a sense of movement and depth.

Phase I Initial GoalMaker Enhancements

North Carolina GoalMaker Portfolios (Current)

	Conservative				Moderate				Aggressive			
	0-5 Yrs	6-10 Yrs	11-15 Yrs	16+ Yrs	0-5 Yrs	6-10 Yrs	11-15 Yrs	16+ Yrs	0-5 Yrs	6-10 Yrs	11-15 Yrs	16+ Yrs
Stable Value	44%	39%	23%	14%	35%	23%	16%	7%	21%	16%	9%	0%
Fixed Income	32%	27%	26%	16%	25%	26%	19%	8%	25%	19%	11%	0%
Large Cap Equity	10%	14%	22%	30%	16%	22%	28%	34%	24%	28%	32%	38%
Small/Mid Cap Equity	6%	8%	12%	16%	10%	12%	14%	20%	12%	14%	20%	26%
International Equity	8%	12%	17%	24%	14%	17%	23%	31%	18%	23%	28%	36%
Diversified Inflation Hedge	0%	0%	0%	0%	0%	0%	0%	0%	0%	0%	0%	0%
Expected Return	4.93%	5.47%	6.32%	7.16%	5.78%	6.32%	6.95%	7.76%	6.46%	6.95%	7.57%	8.29%
Expected Risk	5.41%	7.10%	10.22%	13.75%	8.19%	10.22%	12.79%	16.58%	10.76%	12.79%	15.66%	19.47%
Worst Case: 1 Yr, 2.5% Prob	-5.89%	-8.72%	-14.12%	-20.33%	-10.59%	-14.12%	-18.63%	-25.39%	-15.07%	-18.63%	-23.75%	-30.65%

- In the 2010 update, North Carolina increased the GoalMaker Portfolios' exposure to international equity, as compared to Morningstar's standard glidepath



Mercer's capital market assumptions

Long-term (20-year) projections – October 2012

Risk/Return Assumptions

	Geometric Return	Arithmetic Return	Standard Deviation
Stable Value/GICs	3.4%	3.4%	3.0%
US Aggregate Fixed Income	3.6%	3.7%	5.0%
US Large Cap Equity	7.6%	9.4%	20.0%
US Small/Mid Cap Equity	7.7%	10.0%	23.0%
AC World ex-US All Cap Equity Unhedged	8.6%	10.5%	21.1%
US Inflation Indexed Fixed Income	2.7%	2.8%	4.5%
US REITs	7.3%	8.6%	17.0%
Commodities	4.1%	5.6%	18.0%

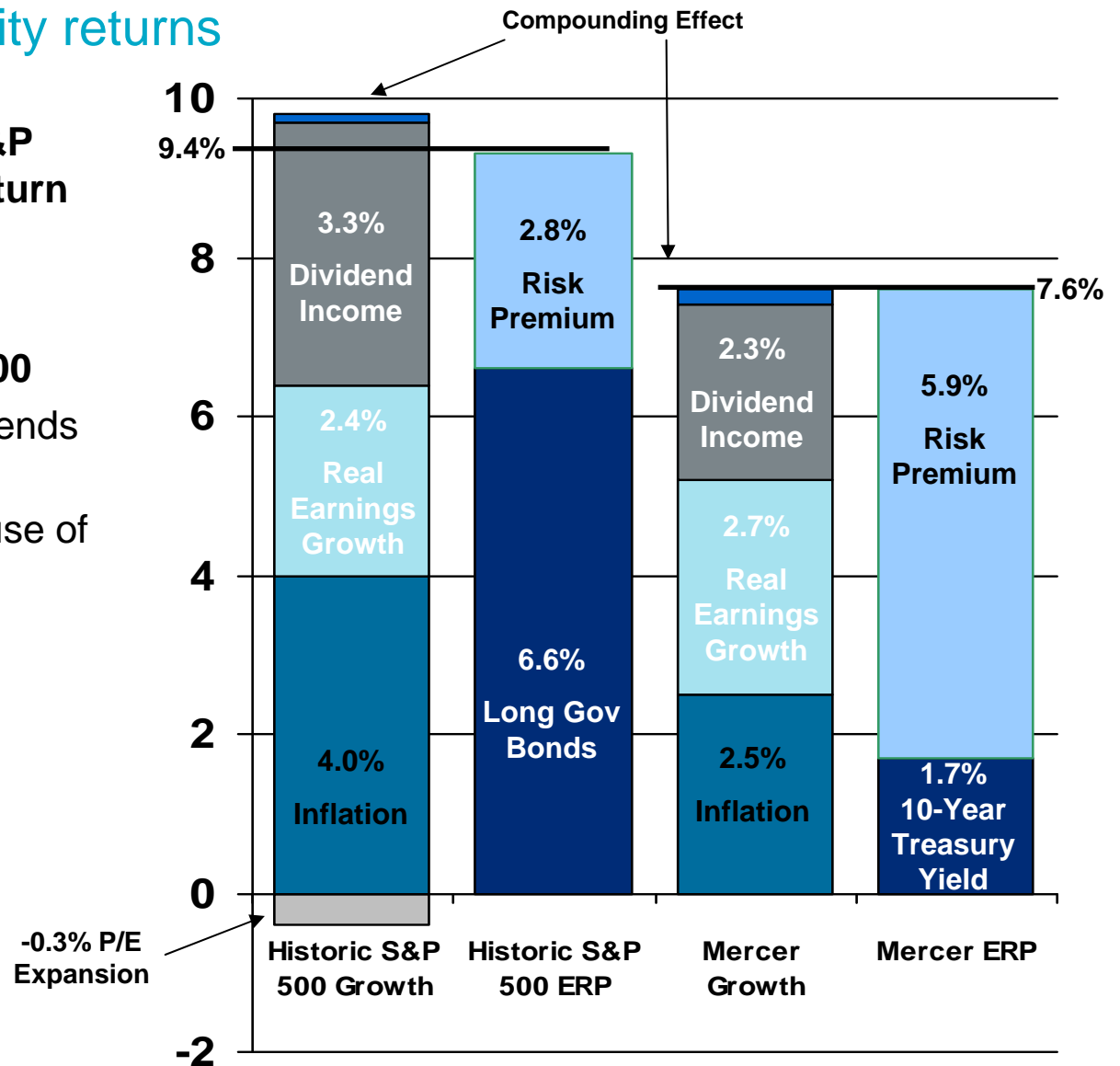
Correlation Assumptions

	Stable Value/GICs	US Aggregate Fixed Income	US Large Cap Equity	US Small/Mid Cap Equity	AC World ex-US All Cap Equity Unhedged	US Inflation Indexed Fixed Income	US REITs	Commodities
Stable Value/GICs	1.00							
US Aggregate Fixed Income	0.10	1.00						
US Large Cap Equity	0.05	0.10	1.00					
US Small/Mid Cap Equity	0.30	0.10	0.88	1.00				
AC World ex-US All Cap Equity Unhedged	0.00	0.05	0.76	0.66	1.00			
US Inflation Indexed Fixed Income	0.20	0.60	0.15	0.15	0.13	1.00		
US REITs	0.50	0.30	0.70	0.75	0.60	0.35	1.00	
Commodities	0.00	0.00	0.10	0.10	0.10	0.30	0.10	1.00

Asset allocation approach

Historical and expected equity returns

- From 1959 through 2011, the S&P 500 earned a 9.4% geometric return
 - Earnings have not matched economic growth
- We forecast 7.6% for the S&P 500
 - Lower income return, as dividends are much lower
 - Higher earnings growth because of lower dividends
 - No P/E impact
 - Lower inflation



Data sources: Standard & Poor's and Federal Reserve
 Analysis by Mercer

Bond returns

July 2012 assumptions

Components of Equilibrium Yields

	3-Month	1-Year	5-Year	10-Year	30-Year
Real Yield Curve	0.80	1.35	1.70	2.00	2.10
Expected Inflation	2.50	2.50	2.50	2.50	2.50
Inflation Risk Premium	0.05	0.10	0.15	0.25	0.30
Nominal Yield Curve	3.35	3.95	4.35	4.75	4.90
AA Corp Default Spreads	0.60	0.70	0.80	0.90	1.00
Corporate Yield Curve	3.95	4.65	5.15	5.65	5.90
Current Real Yields	--	-0.34	-1.00	-0.46	0.56
Current Treasury Yield Curve	0.09	0.21	0.72	1.67	2.76
BofA/ML AA Yields	--	0.67	2.04	3.25	4.28
LIBOR	0.46	--	--	--	--

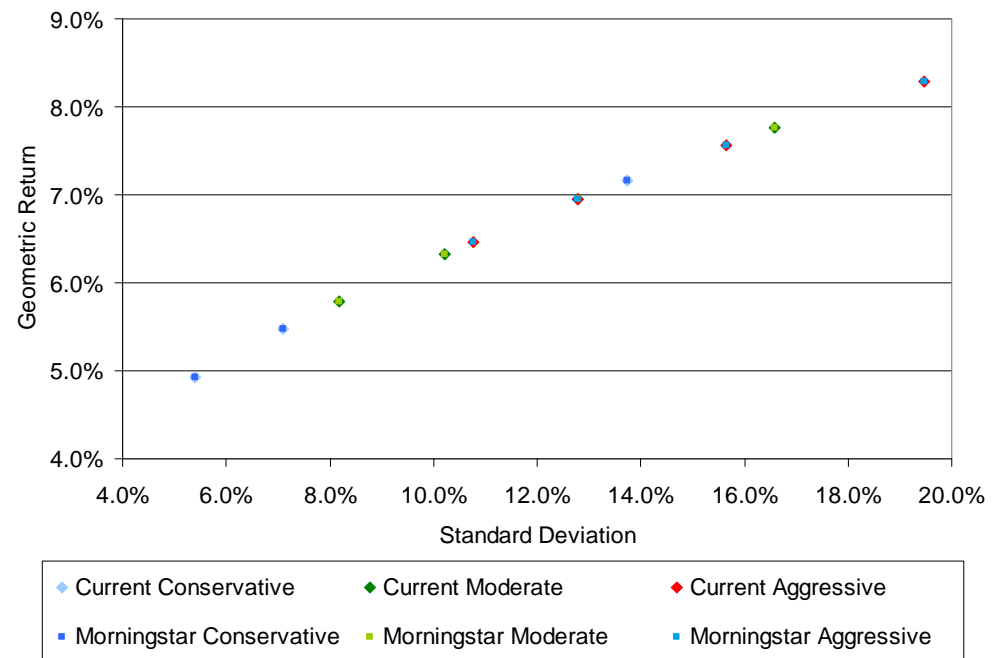
Domestic Fixed Income	Current Yield	Equilibrium Yield	1-Year Expected	2-Year Expected	3-Year Expected	5-Year Expected	10-Year Expected	20-Year Expected	Modified Adj Duration
Aggregate	2.2%	5.1%	-1.3%	-0.9%	-0.6%	0.0%	2.5%	3.8%	4.9
Intermediate G/C	1.5%	4.9%	-1.0%	-0.7%	-0.4%	0.3%	2.6%	3.8%	3.9
Long G/C	3.9%	5.5%	-2.5%	-2.2%	-1.9%	-1.3%	2.0%	3.7%	14.3
Very Long Government	2.9%	5.0%	-6.2%	-5.9%	-5.6%	-4.9%	-0.1%	2.4%	20.0
Inflation Indexed	1.7%	4.3%	-0.3%	-0.1%	0.0%	0.4%	2.3%	3.3%	N/A
Cash	0.0%	3.3%	0.4%	0.7%	1.0%	1.7%	2.5%	3.0%	0.2

Glidepath enhancements

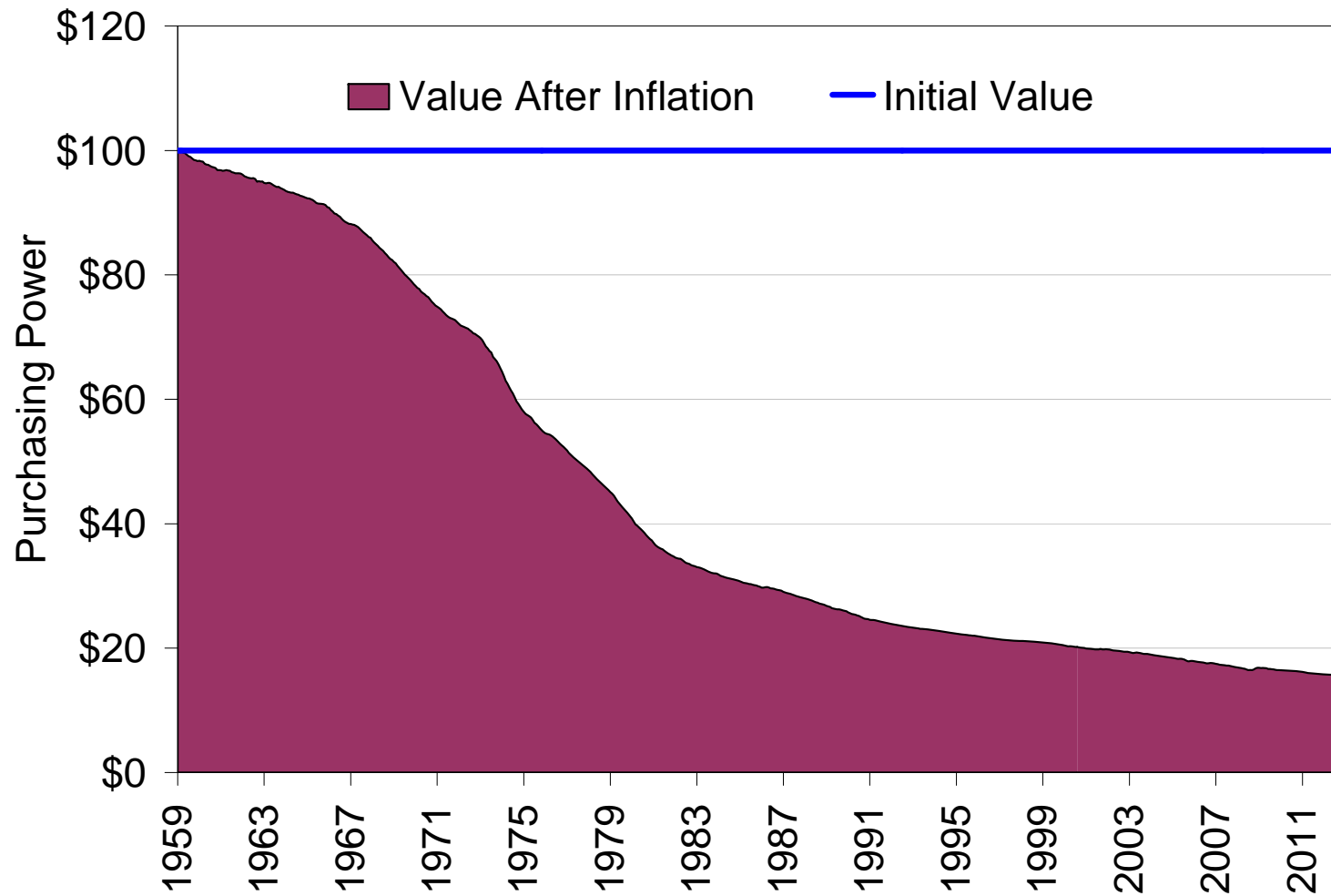
Morningstar – standard version

	Conservative				Moderate				Aggressive			
	0-5 Yrs	6-10 Yrs	11-15 Yrs	16+ Yrs	0-5 Yrs	6-10 Yrs	11-15 Yrs	16+ Yrs	0-5 Yrs	6-10 Yrs	11-15 Yrs	16+ Yrs
Stable Value	44%	39%	23%	14%	35%	23%	16%	7%	21%	16%	9%	0%
Fixed Income	32%	27%	26%	16%	25%	26%	19%	8%	25%	19%	11%	0%
Large Cap Equity	10%	14%	22%	30%	16%	22%	28%	34%	24%	28%	32%	38%
Small/Mid Cap Equity	6%	8%	12%	16%	10%	12%	14%	20%	12%	14%	20%	26%
International Equity	8%	12%	17%	24%	14%	17%	23%	31%	18%	23%	28%	36%
Diversified Inflation Hedge	0%	0%	0%	0%	0%	0%	0%	0%	0%	0%	0%	0%
Expected Return	4.93%	5.47%	6.32%	7.16%	5.78%	6.32%	6.95%	7.76%	6.46%	6.95%	7.57%	8.29%
Expected Risk	5.41%	7.10%	10.22%	13.75%	8.19%	10.22%	12.79%	16.58%	10.76%	12.79%	15.66%	19.47%
Expected Inflation Beta	-0.46	-0.44	-0.42	-0.38	-0.43	-0.42	-0.39	-0.35	-0.41	-0.39	-0.36	-0.32
Worst Case: 1 Yr, 2.5% Prob	-5.89%	-8.72%	-14.12%	-20.33%	-10.59%	-14.12%	-18.63%	-25.39%	-15.07%	-18.63%	-23.75%	-30.65%

- Morningstar’s new standard glidepath has the same international equity exposure as North Carolina’s existing GoalMaker Portfolios
- This glidepath has the **same construction** as North Carolina’s existing GoalMaker Portfolios

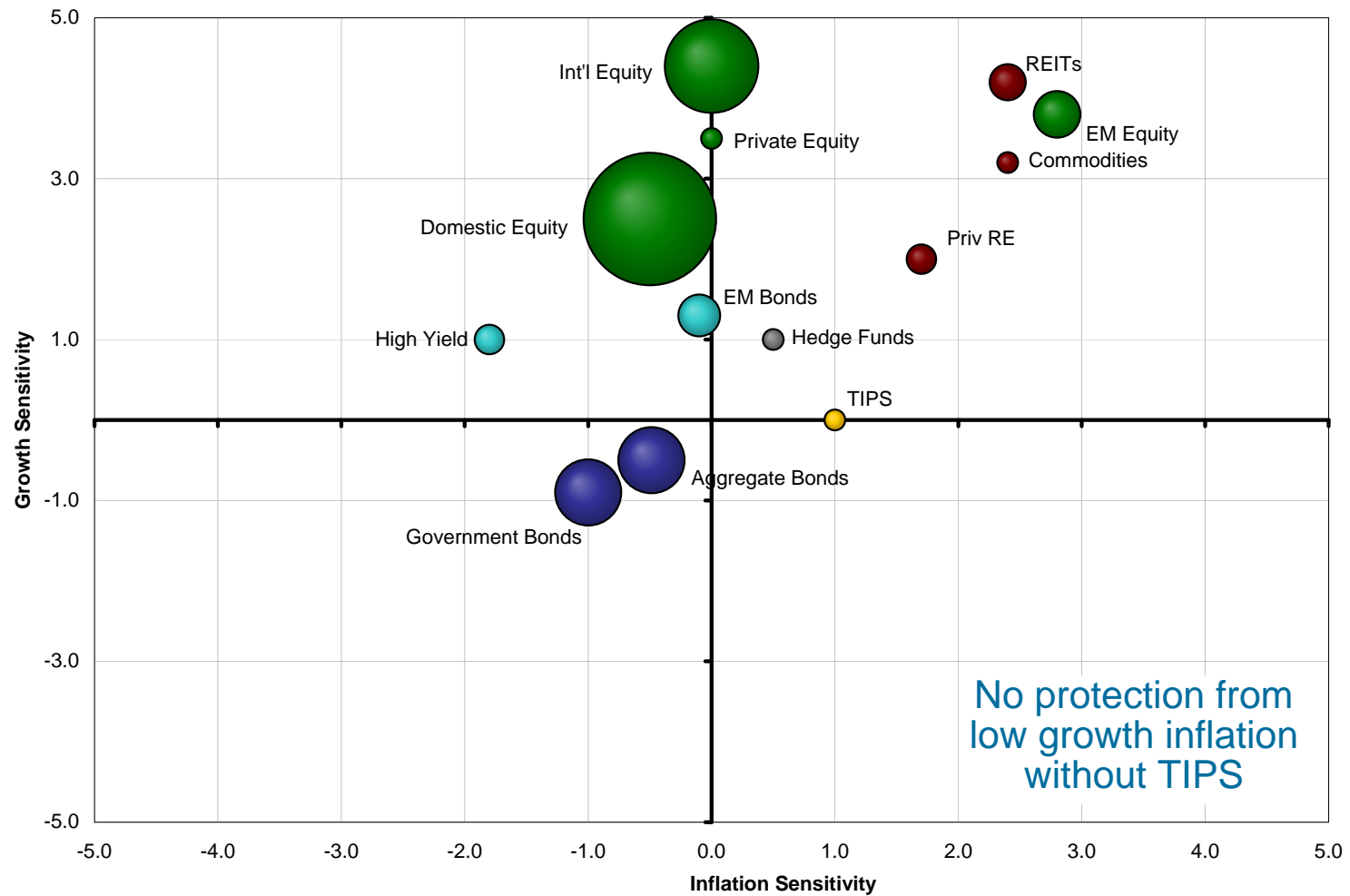


Retirement Savings The Danger of Inflation



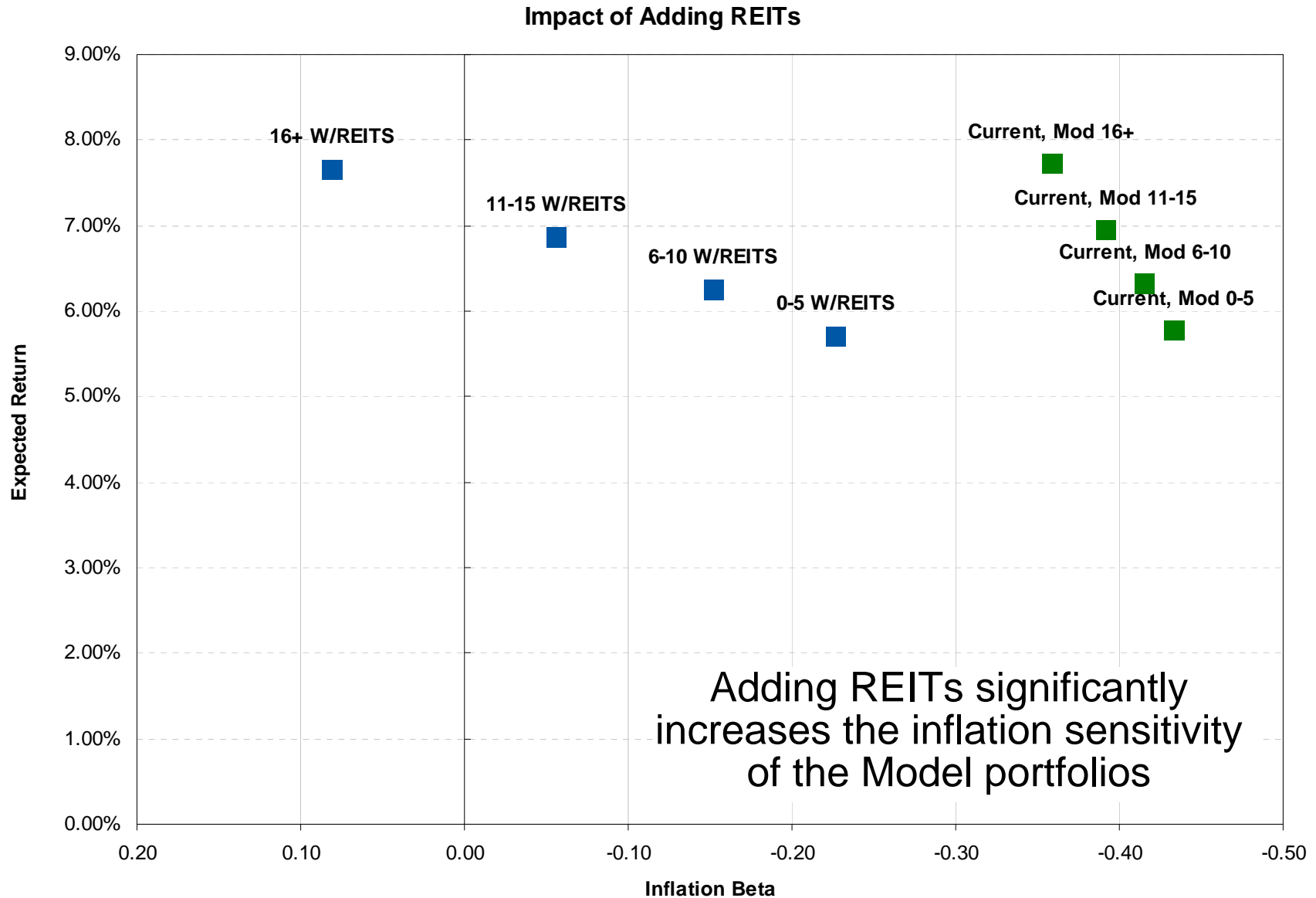
Asset classes for glidepath

Sensitivity to inflation and growth



Asset classes for glidepath

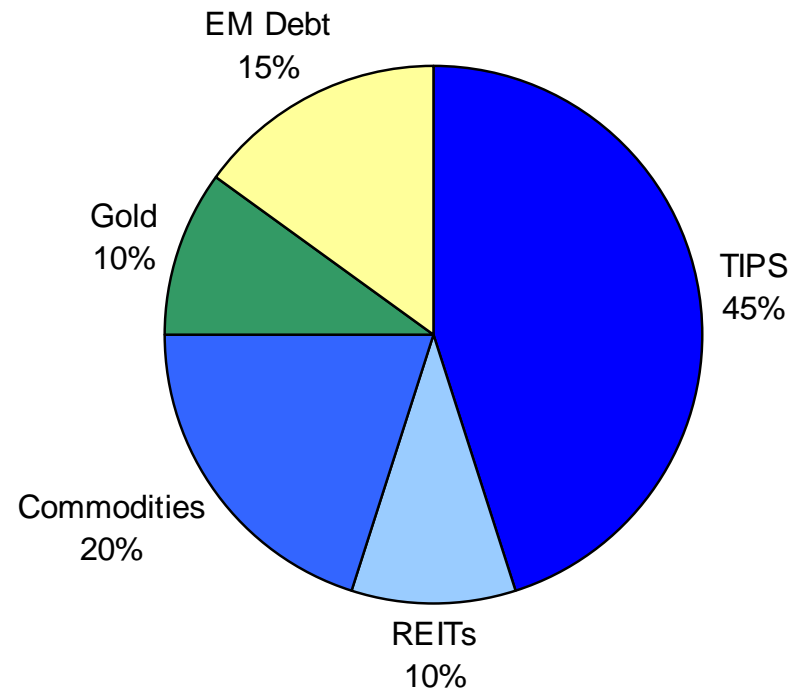
Impact of adding REITs



Diversified inflation hedge fund

PIMCO Inflation Response Multi-Asset Fund

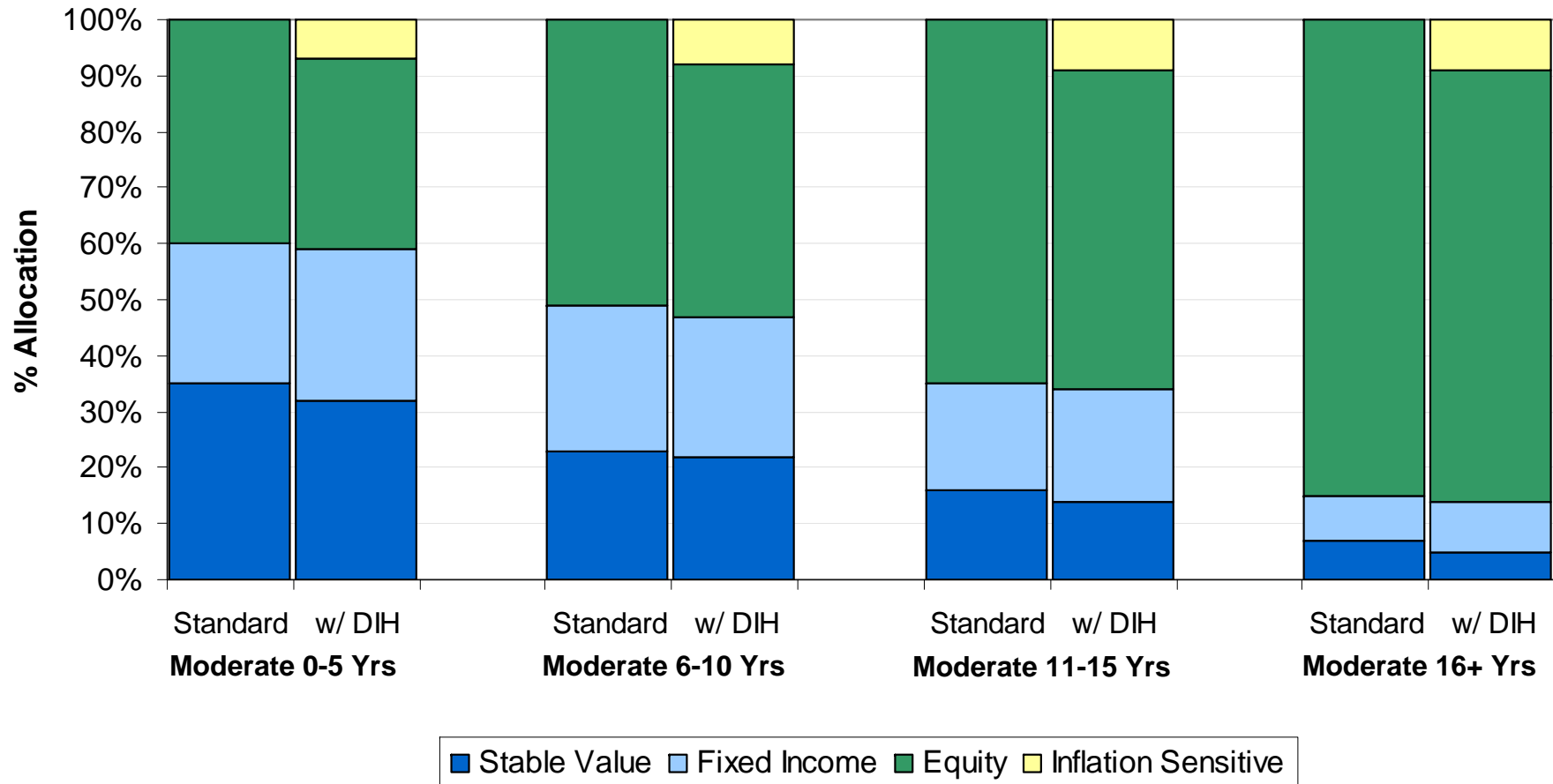
Target Asset Allocation



- Expected return: 4.29%
- Expected risk: 6.86%
- Expected inflation beta: 1.34

Glidepath enhancements

Morningstar – With and Without Inflation Fund

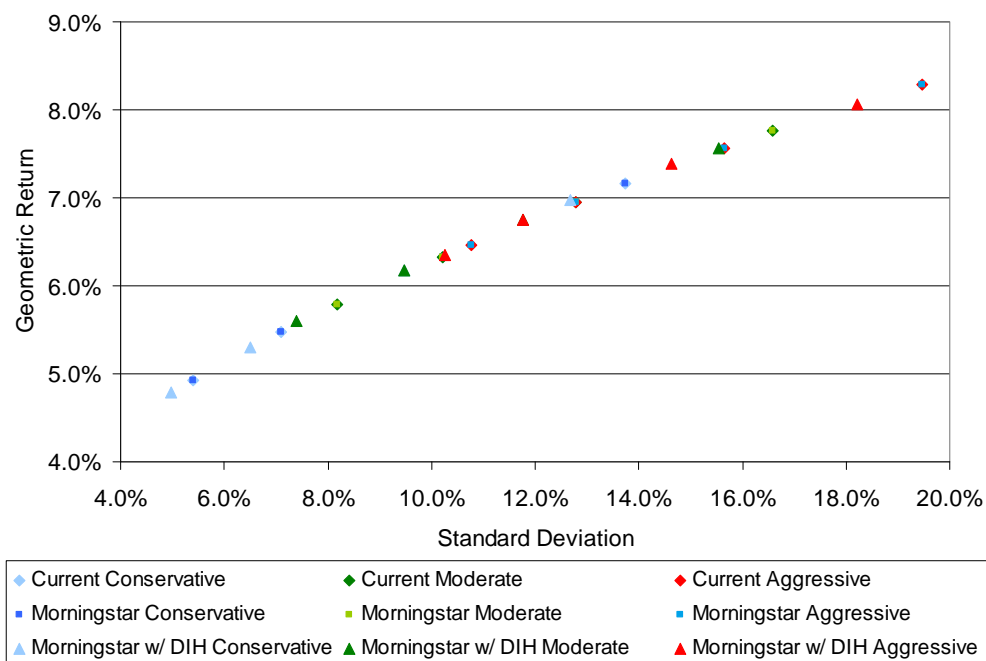


Glidepath enhancements

Morningstar – with exposure to diversified inflation hedge

	Conservative				Moderate				Aggressive			
	0-5 Yrs	6-10 Yrs	11-15 Yrs	16+ Yrs	0-5 Yrs	6-10 Yrs	11-15 Yrs	16+ Yrs	0-5 Yrs	6-10 Yrs	11-15 Yrs	16+ Yrs
Stable Value	41%	36%	22%	11%	32%	22%	14%	5%	18%	14%	7%	0%
Fixed Income	34%	29%	25%	18%	27%	25%	20%	9%	25%	20%	11%	0%
Large Cap Equity	10%	14%	20%	26%	16%	20%	24%	32%	22%	24%	30%	38%
Small/Mid Cap Equity	4%	6%	10%	14%	6%	10%	14%	20%	12%	14%	18%	24%
International Equity	6%	9%	15%	22%	12%	15%	19%	25%	15%	19%	24%	29%
Diversified Inflation Hedge	5%	6%	8%	9%	7%	8%	9%	9%	8%	9%	10%	9%
Expected Return	4.73%	5.23%	6.08%	6.88%	5.52%	6.08%	6.66%	7.48%	6.27%	6.66%	7.29%	7.98%
Expected Risk	4.85%	6.34%	9.26%	12.42%	7.20%	9.26%	11.52%	15.28%	10.04%	11.52%	14.35%	17.94%
Expected Inflation Beta	-0.38	-0.34	-0.28	-0.22	-0.31	-0.28	-0.24	-0.21	-0.28	-0.24	-0.20	-0.19
Worst Case: 1 Yr, 2.5% Prob	-4.97%	-7.45%	-12.44%	-17.96%	-8.89%	-12.44%	-16.38%	-23.08%	-13.81%	-16.38%	-21.40%	-27.90%

- Exposure to inflation protection asset class helps participants preserve their purchasing power particularly as allocation to fixed income exposes them to inflation risk
- Allocation to diversified inflation hedge comes primarily from stable value and fixed income
- This glidepath exhibits a slight decrease in expected return, with a large reduction in expected risk



Glidepath enhancements – with exposure to diversified inflation hedge Mercer recommended

	Conservative				Moderate				Aggressive			
	0-5 Yrs	6-10 Yrs	11-15 Yrs	16+ Yrs	0-5 Yrs	6-10 Yrs	11-15 Yrs	16+ Yrs	0-5 Yrs	6-10 Yrs	11-15 Yrs	16+ Yrs
Stable Value	40%	35%	22%	10%	31%	21%	14%	5%	17%	14%	7%	0%
Fixed Income	33%	29%	25%	20%	27%	25%	20%	9%	25%	20%	11%	0%
Large Cap Equity	8%	12%	20%	25%	14%	19%	24%	32%	20%	24%	30%	38%
Small/Mid Cap Equity	5%	7%	10%	15%	8%	11%	14%	20%	12%	14%	18%	23%
International Equity	6%	10%	15%	23%	11%	15%	19%	25%	16%	19%	24%	30%
Diversified Inflation Hedge	8%	8%	8%	8%	9%	9%	9%	9%	10%	10%	10%	10%
Expected Return	4.73%	5.24%	6.08%	6.89%	5.51%	6.08%	6.66%	7.48%	6.28%	6.64%	7.29%	7.96%
Expected Risk	4.82%	6.32%	9.26%	12.41%	7.19%	9.24%	11.52%	15.28%	9.99%	11.45%	14.35%	17.74%
Expected Inflation Beta	-0.32	-0.31	-0.28	-0.24	-0.28	-0.26	-0.24	-0.21	-0.24	-0.22	-0.20	-0.17
Worst Case: 1 Yr, 2.5% Prob	-4.91%	-7.41%	-12.44%	-17.92%	-8.88%	-12.40%	-16.38%	-23.08%	-13.70%	-16.26%	-21.40%	-27.52%

- Increase exposure to diversified inflation hedge fund, particularly when nearing retirement, to help offset inflation risk from high fixed income exposure
- Maintain constant exposure to diversified inflation hedge fund in each model
 - 8% in Conservative, 9% in Moderate, 10% in Aggressive
 - Provides diversification from equity risk in long-dated allocations

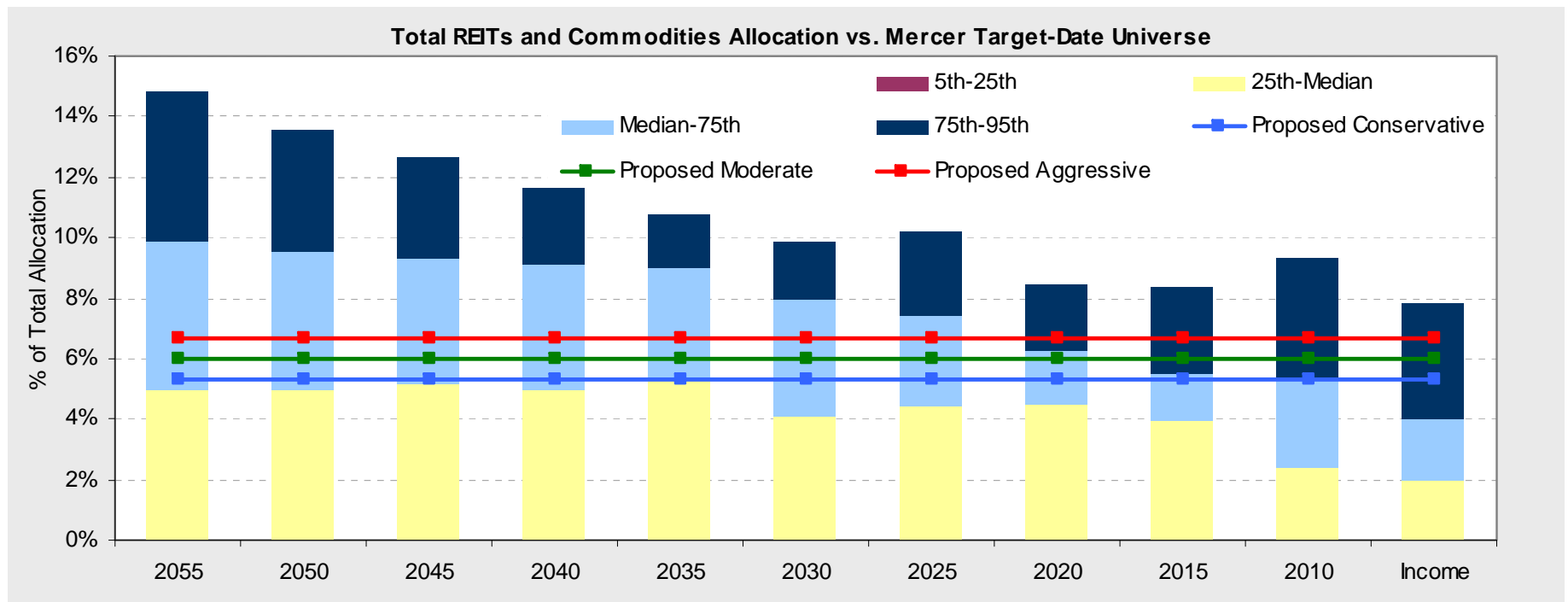
Glidepath enhancements – with exposure to diversified inflation hedge Net changes from Morningstar to Mercer recommended

	Conservative				Moderate				Aggressive			
	0-5 Yrs	6-10 Yrs	11-15 Yrs	16+ Yrs	0-5 Yrs	6-10 Yrs	11-15 Yrs	16+ Yrs	0-5 Yrs	6-10 Yrs	11-15 Yrs	16+ Yrs
Stable Value	-1%	-1%	0%	-1%	-1%	-1%	0%	0%	-1%	0%	0%	0%
Fixed Income	-1%	-1%	0%	2%	0%	0%	0%	0%	-1%	-1%	0%	0%
Large Cap Equity	-2%	-2%	0%	-1%	-2%	-1%	0%	0%	-2%	-1%	0%	-1%
Small/Mid Cap Equity	1%	1%	0%	0%	2%	1%	0%	0%	0%	0%	0%	-2%
International Equity	0%	1%	0%	1%	-1%	0%	0%	0%	1%	0%	0%	1%
Diversified Inflation Hedge	3%	2%	0%	-1%	2%	1%	0%	0%	2%	1%	0%	1%
Expected Return	0.00%	0.01%	0.00%	0.01%	-0.01%	0.00%	0.00%	0.00%	0.01%	-0.02%	0.00%	-0.02%
Expected Risk	-0.03%	-0.02%	0.00%	-0.01%	-0.01%	-0.02%	0.00%	0.00%	-0.05%	-0.07%	0.00%	-0.20%
Expected Inflation Beta	0.06	0.04	0.00	-0.02	0.03	0.02	0.00	0.00	0.04	0.02	0.00	0.02
Worst Case: 1 Yr, 2.5% Prob	0.07%	0.04%	0.00%	0.03%	0.01%	0.04%	0.00%	0.00%	0.11%	0.12%	0.00%	0.37%

- Reduction in risk while slightly increasing or maintaining similar return expectation
- Allocation to diversified inflation hedge comes primarily from equities, to help offset increased equity risk in long-dated allocations and provide inflation protection in short-dated allocations

Glidepath enhancements – with exposure to diversified inflation hedge

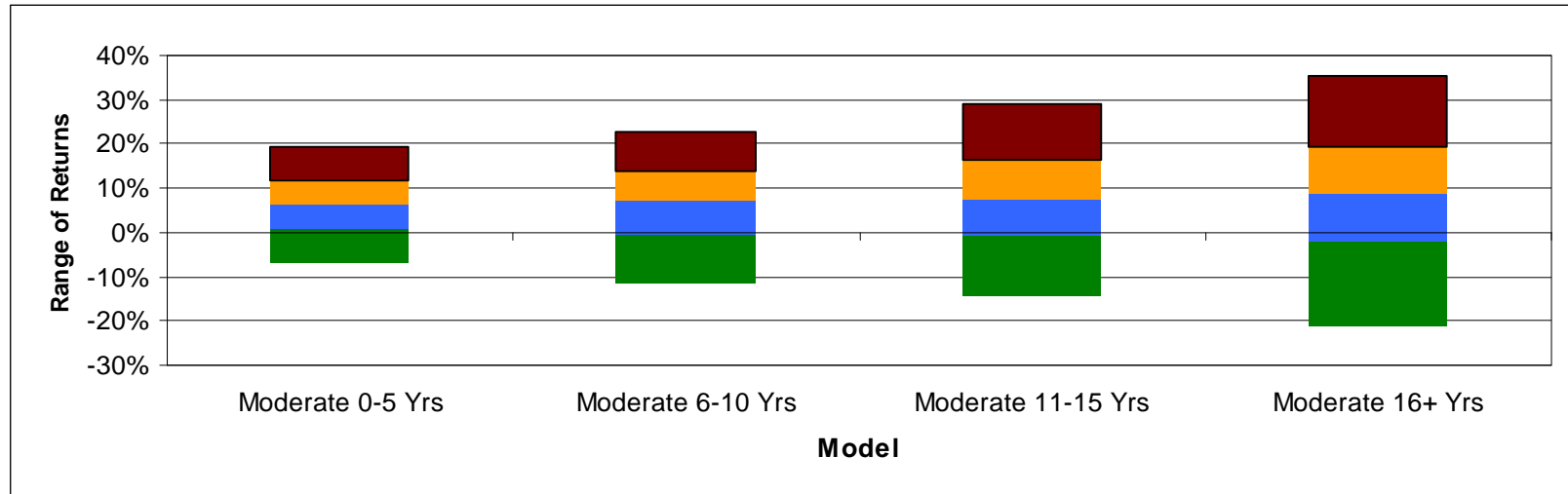
Inflation protection allocation comparison



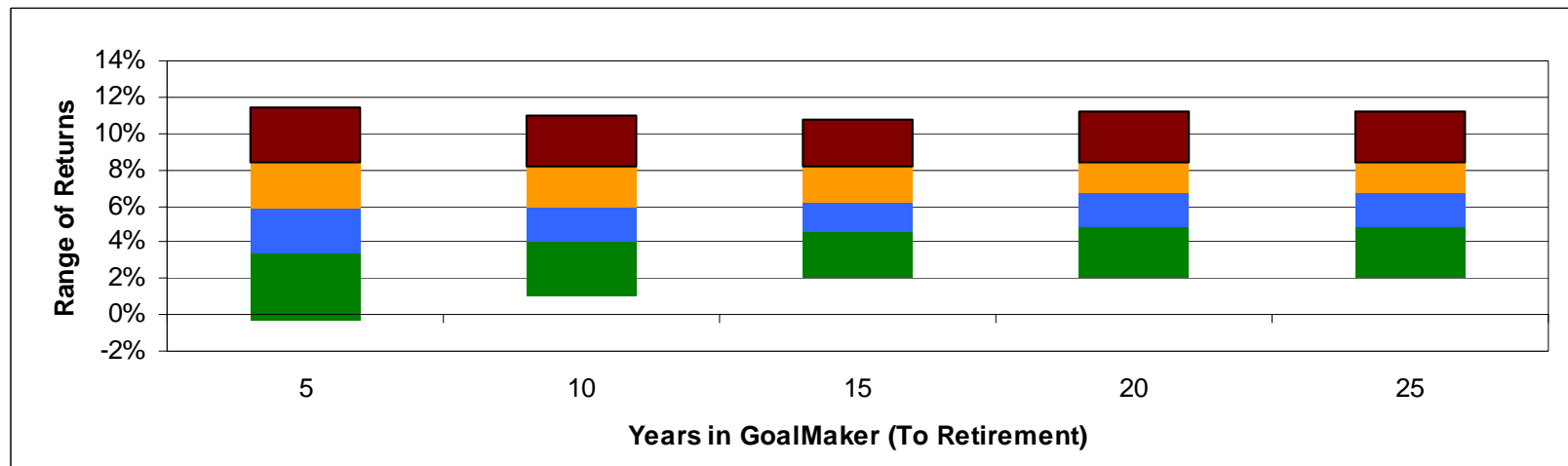
Mercer Target-Date Universe based on Mercer Third Quarter 2012 Target Date Fund Survey and includes 35 off-the-shelf target-date strategies.

Glidepath enhancements – with exposure to diversified inflation hedge

Range of One Year Returns



Range of Cumulative Return To Retirement





Phase I

Implementing Phase I

GoalMaker Asset Allocation

Proposed

	Conservative				Moderate				Aggressive			
	0-5 Yrs	6-10 Yrs	11-15 Yrs	16+ Yrs	0-5 Yrs	6-10 Yrs	11-15 Yrs	16+ Yrs	0-5 Yrs	6-10 Yrs	11-15 Yrs	16+ Yrs
Stable Value	40%	35%	22%	10%	31%	21%	14%	5%	17%	14%	7%	0%
Fixed Income	33%	29%	25%	20%	27%	25%	20%	9%	25%	20%	11%	0%
Large Cap Equity	8%	12%	20%	25%	14%	19%	24%	32%	20%	24%	30%	38%
Small/Mid Cap Equity	5%	7%	10%	15%	8%	11%	14%	20%	12%	14%	18%	23%
International Equity	6%	10%	15%	23%	11%	15%	19%	25%	16%	19%	24%	30%
Diversified Inflation Hedge	8%	8%	8%	8%	9%	9%	9%	9%	10%	10%	10%	10%
Expected Return	4.73%	5.24%	6.08%	6.89%	5.51%	6.08%	6.66%	7.48%	6.28%	6.64%	7.29%	7.96%
Expected Risk	4.82%	6.32%	9.26%	12.41%	7.19%	9.24%	11.52%	15.28%	9.99%	11.45%	14.35%	17.74%
Expected Inflation Beta	-0.32	-0.31	-0.28	-0.24	-0.28	-0.26	-0.24	-0.21	-0.24	-0.22	-0.20	-0.17
Worst Case: 1 Yr, 2.5% Prob	-4.91%	-7.41%	-12.44%	-17.92%	-8.88%	-12.40%	-16.38%	-23.08%	-13.70%	-16.26%	-21.40%	-27.52%

- Implement equity allocations favoring active management the inefficient areas of small cap and international stocks; use half passive management in efficient US large cap and fixed income markets
- Utilize global manager to obtain part of the international equity exposure in order to capture greater excess return potential

Refresher: Active vs. passive Underlying funds

- The GoalMaker portfolios currently use both active and passive underlying funds in every asset class
- Based on Mercer's evaluation and recommendation (May 2012), the Committee approved the following actions:
 - Move to 100% active in small/mid cap equity and international equity
 - Active management is worth the risk in these asset classes
 - Maintain current split between passive and active in fixed income and large cap equity
 - The reward-to-risk tradeoff is less attractive in these markets

- Example:

	Current Moderate 6-10 Yrs		New Moderate 6-10 Yrs
Stable Value Fund	23%		23%
Fixed Income Passive Fund	13%		13%
Fixed Income Fund	13%		13%
Large Cap Passive Fund	10%		10%
Large Cap Value Fund	5%		5%
Large Cap Growth Fund	5%		5%
Small/Mid Cap Passive Fund	6%		0%
Small/Mid Cap Value Fund	3%		6%
Small/Mid Cap Growth Fund	3%		6%
International Passive Fund	8%		0%
International Equity Fund	7%		15%
Global Equity Fund	4%		4%
Diversified Inflation Hedge Fund	0%		0%



Features of a “global” equity mandate vs. a “US and non-US” mandate

- Expect higher excess return with equal or lesser risk
- Markets, sectors and stocks are increasingly connected in a global context
- Regional (US and Non-US) managers hampered by:
 - No ability to over/under weight US
 - Not able to choose best stock in global industries

Greater Security Selection Flexibility in Global Equity Portfolio

			Portfolio Weight		
		Return	US Manager	Int'l Manager	Global Manager
Autos	Ford	10%	33%		33%
	Toyota	7%		33%	
Industrial	GE	10%	33%		33%
	Siemens	5%		33%	
Technology	Apple	3%	33%		
	Samsung	10%		33%	33%
Portfolio Return			7.6%	7.3%	9.9%

Benefit of Lowering US Only Exposure

	Exposure		Excess Return	Current	Proposed
	US	Int'l		Weight	Weight
US Managers	100%	0%	0.40%	61%	46%
Int'l Managers	0%	100%	1.25%	31%	16%
Global Managers	50%	50%	1.00%	8%	38%
Expected Excess Return				0.71%	0.76%
US Exposure				65%	65%
NUS Exposure				35%	35%

Implementation considerations

Proposed allocation by fund

	Conservative				Moderate				Aggressive			
	0-5 Yrs	6-10 Yrs	11-15 Yrs	16+ Yrs	0-5 Yrs	6-10 Yrs	11-15 Yrs	16+ Yrs	0-5 Yrs	6-10 Yrs	11-15 Yrs	16+ Yrs
Stable Value Fund	40%	35%	22%	10%	31%	21%	14%	5%	17%	13%	7%	0%
Fixed Income Passive Fund	17%	14%	13%	10%	13%	13%	10%	5%	12%	10%	6%	0%
Fixed Income Fund	16%	14%	12%	10%	13%	12%	10%	4%	12%	10%	5%	0%
Large Cap Passive Fund	4%	4%	7%	8%	5%	7%	7%	10%	7%	7%	8%	11%
Large Cap Value Fund	1%	2%	3%	3%	2%	3%	4%	5%	3%	4%	5%	6%
Large Cap Growth Fund	1%	2%	3%	3%	2%	3%	4%	5%	3%	4%	5%	6%
Small/Mid Cap Passive Fund	0%	0%	0%	0%	0%	0%	0%	0%	0%	0%	0%	0%
Small/Mid Cap Value Fund	2%	3%	5%	7%	4%	5%	7%	10%	6%	7%	9%	11%
Small/Mid Cap Growth Fund	2%	3%	5%	7%	4%	5%	7%	10%	6%	7%	9%	11%
International Passive Fund	0%	0%	0%	0%	0%	0%	0%	0%	0%	0%	0%	0%
International Equity Fund	3%	5%	7%	11%	6%	7%	9%	12%	8%	9%	12%	15%
Global Equity Fund	6%	10%	15%	23%	11%	15%	19%	25%	16%	19%	24%	30%
Diversified Inflation Hedge Fund	8%	8%	8%	8%	9%	9%	9%	9%	10%	10%	10%	10%
% Active	79%	82%	80%	82%	82%	80%	83%	85%	81%	83%	86%	89%
% Passive	21%	18%	20%	18%	18%	20%	17%	15%	19%	17%	14%	11%
% Equity in US	81%	78%	76%	70%	78%	76%	74%	72%	76%	74%	71%	68%
% Equity in Non-US	19%	22%	24%	30%	22%	24%	26%	28%	24%	26%	29%	32%

Implementation considerations

Asset impact

Funds and Sub-Advisors	Current Assets	Asset Flows from Current to Proposed Glidepath	Proposed Glidepath
North Carolina Stable Value Fund Galliard	\$2,214,104,500 \$2,214,104,500	-\$59,650,002 -\$59,650,002	\$2,154,454,498 \$2,154,454,498
North Carolina Fixed Income Passive Fund BlackRock	\$241,841,488 \$241,841,488	-\$1,222,147 -\$1,222,147	\$240,619,341 \$240,619,341
North Carolina Fixed Income Fund 50% JP Morgan 50% PIMCO	\$511,374,404 \$257,327,525 \$254,046,880	\$19,591,022 \$9,795,511 \$9,795,511	\$530,965,427 \$267,123,036 \$263,842,391
North Carolina Large Cap Passive Fund BlackRock	\$1,028,877,955 \$1,028,877,955	-\$120,053,892 -\$120,053,892	\$908,824,063 \$908,824,063
North Carolina Large Cap Value Fund 33.3% Hotchkis & Wiley 33.3% Wellington Management Company 33.3% Robeco BP	\$704,391,637 \$235,272,418 \$228,813,741 \$240,305,478	-\$45,152,776 -\$15,050,925 -\$15,050,925 -\$15,050,925	\$659,238,861 \$220,221,493 \$213,762,816 \$225,254,552
North Carolina Large Cap Growth Fund 33.3% Sands Capital Management 33.3% Wellington Management Company 33.3% Neuberger Berman	\$688,681,864 \$242,963,833 \$228,394,213 \$217,323,818	-\$45,566,869 -\$15,188,956 -\$15,188,956 -\$15,188,956	\$643,114,995 \$227,774,877 \$213,205,257 \$202,134,861
North Carolina SMID Cap Passive Fund BlackRock	\$353,945,565 \$353,945,565	-\$209,595,717 -\$209,595,717	\$144,349,848 \$144,349,848
North Carolina SMID Value Fund 33.3% Hotchkis & Wiley 33.3% EARNEST Partners 33.3% WEDGE Capital Management	\$229,295,326 \$81,446,848 \$73,677,607 \$74,170,872	\$82,284,230 \$27,428,077 \$27,428,077 \$27,428,077	\$311,579,556 \$108,874,924 \$101,105,683 \$101,598,948
North Carolina SMID Growth Fund 50% TimesSquare Capital Management 50% Brown Advisory	\$141,137,391 \$70,720,212 \$70,417,180	\$82,589,444 \$41,294,722 \$41,294,722	\$223,726,835 \$112,014,934 \$111,711,902
North Carolina International Passive Fund BlackRock	\$289,192,400 \$289,192,400	-\$262,599,681 -\$262,599,681	\$26,592,719 \$26,592,719
North Carolina International Equity Fund 50% Baillie Gifford 50% Mondrian Investment Partners	\$436,251,135 \$218,252,444 \$217,998,692	-\$10,423,148 -\$5,211,574 -\$5,211,574	\$425,827,987 \$213,040,870 \$212,787,118
North Carolina Global Equity Fund 50% Wellington Management Company 50% Arrowstreet	\$163,483,895 \$83,497,976 \$79,985,918	\$339,522,692 \$169,761,346 \$169,761,346	\$503,006,587 \$253,259,322 \$249,747,264
North Carolina Diversified Inflation Hedge Fund PIMCO	\$0 \$0	\$230,276,844 \$230,276,844	\$230,276,844 \$230,276,844
Total	\$7,002,577,561	\$0	\$7,002,577,561

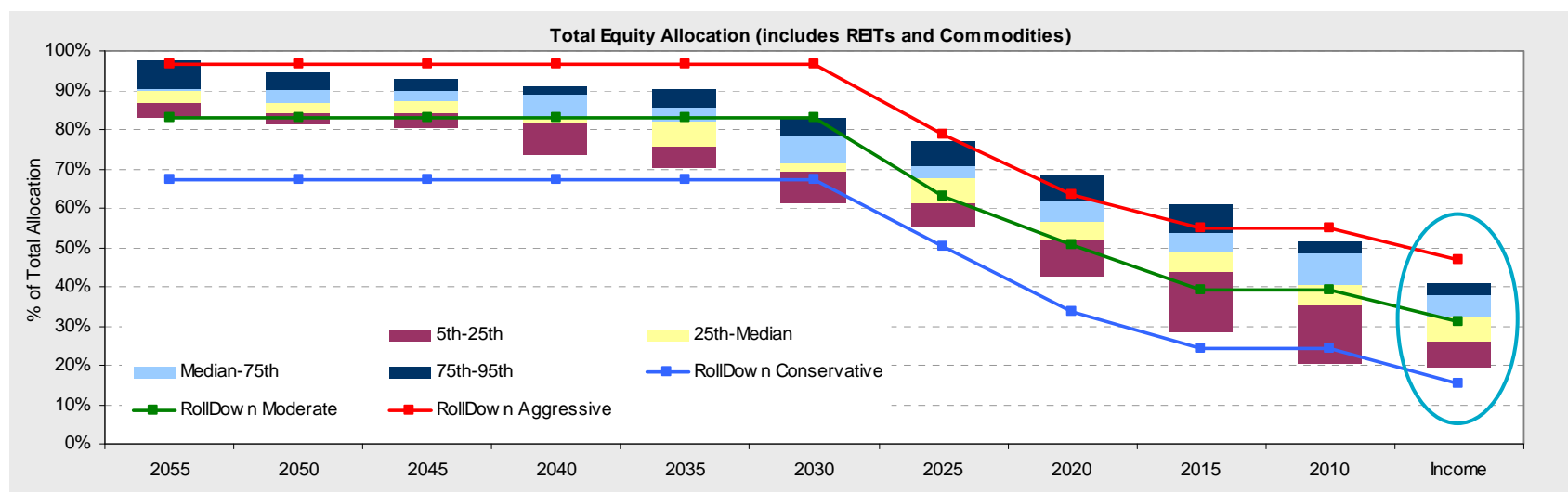
Phase II

Further Enhancements in Process

Glidepath enhancements

Income (post-retirement) allocation considerations

	Conservative					Moderate					Aggressive				
	Income	0-5 Yrs	6-10 Yrs	11-15 Yrs	16+ Yrs	Income	0-5 Yrs	6-10 Yrs	11-15 Yrs	16+ Yrs	Income	0-5 Yrs	6-10 Yrs	11-15 Yrs	16+ Yrs
Stable Value	47%	40%	35%	22%	10%	39%	31%	21%	14%	5%	24%	17%	13%	7%	0%
Fixed Income	35%	33%	29%	25%	20%	27%	27%	25%	20%	9%	26%	24%	20%	11%	0%
Large Cap Equity	4%	8%	12%	20%	25%	10%	14%	19%	24%	32%	17%	20%	24%	30%	38%
Small/Mid Cap Equity	3%	5%	7%	10%	15%	6%	8%	11%	14%	20%	10%	12%	14%	18%	23%
International Equity	3%	6%	10%	15%	23%	8%	11%	15%	19%	25%	13%	16%	19%	24%	30%
Diversified Inflation Hedge	8%	8%	8%	8%	8%	9%	9%	9%	9%	9%	10%	10%	10%	10%	10%
Expected Return	4.19%	4.73%	5.24%	6.08%	6.89%	5.05%	5.51%	6.09%	6.66%	7.48%	5.86%	6.29%	6.66%	7.29%	7.96%
Expected Risk	3.52%	4.82%	6.32%	9.26%	12.41%	5.73%	7.19%	9.26%	11.52%	15.28%	8.43%	10.02%	11.51%	14.35%	17.74%
Expected Inflation Beta	-0.34	-0.32	-0.31	-0.28	-0.24	-0.29	-0.28	-0.26	-0.24	-0.21	-0.25	-0.24	-0.22	-0.20	-0.17
Worst Case: 1 Yr, 2.5% Prob	-2.85%	-4.91%	-7.41%	-12.44%	-17.92%	-6.41%	-8.88%	-12.43%	-16.38%	-23.08%	-10.99%	-13.76%	-16.37%	-21.40%	-27.52%



- Existing glidepath construction does not include an “income” allocation
- Target date funds generally provide this equity roll-down for participants post-retirement

Glidepath enhancements

Step-down smoothing considerations

- At present, the proposed glidepath results in a steep drop in equity exposure from one point to the next, particularly from the “16+ Yrs” point to the “11-15 Yrs” point in each of the three models (i.e., C04 to C03, M04 to M03, and A04 to A03).
- As Prudential does not currently have the capability to create additional points on the glidepath, one potential solution is to utilize the pre-existing points to create a new smoother path that allows for a more gradual decrease in equity exposure.
- The following table displays a path that incorporates movement at the mid-point of each portfolio (e.g., the mid-point of “11-15 Yrs” is shown as the “12.5 Yrs” portfolio).

Years to Retirement	Target Retirement	Conservative		Moderate		Aggressive	
		Proposed Path	% Equity (incl. REITs & Commodities)	Proposed Path	% Equity (incl. REITs & Commodities)	Proposed Path	% Equity (incl. REITs & Commodities)
15	2030	C04	67%	M04	83%	A04	97%
12.5	2027-2028	M03	63%	A03	79%	M04	83%
10	2025	C03	50%	M03	63%	A03	79%
7.5	2022-2023	M01	39%	A01	55%	C04	67%
5	2020	C02	34%	M02	51%	A02	63%
2.5	2017-2018	C02	34%	M02	51%	A01	55%
0	2015	C01	24%	M01	39%	A01	55%

Implementation considerations

Potential allocation by fund – Conservative model

	Conservative							
	Inc	0-2.5 Yrs	2.5-5 Yrs	6-7.5 Yrs	7.5-10 Yrs	11-12.5 Yrs	12.5-15 Yrs	16+ Yrs
Stable Value Fund	47%	40%	35%	35%	31%	22%	14%	10%
Fixed Income Passive Fund	18%	17%	14%	14%	13%	13%	10%	10%
Fixed Income Fund	18%	16%	14%	14%	13%	12%	10%	10%
Large Cap Passive Fund	2%	4%	4%	4%	5%	7%	7%	8%
Large Cap Value Fund	1%	1%	2%	2%	2%	3%	4%	3%
Large Cap Growth Fund	1%	1%	2%	2%	2%	3%	4%	3%
Small/Mid Cap Passive Fund	0%	0%	0%	0%	0%	0%	0%	0%
Small/Mid Cap Value Fund	1%	2%	3%	3%	4%	5%	7%	7%
Small/Mid Cap Growth Fund	1%	2%	3%	3%	4%	5%	7%	7%
International Passive Fund	0%	0%	0%	0%	0%	0%	0%	0%
International Equity Fund	2%	3%	5%	5%	6%	7%	9%	11%
Global Equity Fund	2%	6%	10%	10%	11%	15%	19%	23%
Diversified Inflation Hedge Fund	8%	8%	8%	8%	9%	8%	9%	8%
% Active	81%	79%	82%	82%	82%	80%	83%	82%
% Passive	19%	21%	18%	18%	18%	20%	17%	18%
% US	97%	94%	90%	90%	89%	86%	82%	78%
% Non-US	3%	6%	10%	10%	12%	15%	19%	23%

Implementation considerations

Potential allocation by fund – Moderate model

	Moderate							
	Inc	0-2.5 Yrs	2.5-5 Yrs	6-7.5 Yrs	7.5-10 Yrs	11-12.5 Yrs	12.5-15 Yrs	16+ Yrs
Stable Value Fund	39%	31%	21%	21%	17%	14%	7%	5%
Fixed Income Passive Fund	14%	13%	13%	13%	12%	10%	6%	5%
Fixed Income Fund	14%	13%	12%	12%	12%	10%	5%	4%
Large Cap Passive Fund	4%	5%	7%	7%	7%	7%	8%	10%
Large Cap Value Fund	2%	2%	3%	3%	3%	4%	5%	5%
Large Cap Growth Fund	2%	2%	3%	3%	3%	4%	5%	5%
Small/Mid Cap Passive Fund	0%	0%	0%	0%	0%	0%	0%	0%
Small/Mid Cap Value Fund	3%	4%	5%	5%	6%	7%	9%	10%
Small/Mid Cap Growth Fund	3%	4%	5%	5%	6%	7%	9%	10%
International Passive Fund	0%	0%	0%	0%	0%	0%	0%	0%
International Equity Fund	6%	6%	7%	7%	8%	9%	12%	12%
Global Equity Fund	6%	11%	15%	15%	16%	19%	24%	25%
Diversified Inflation Hedge Fund	9%	9%	9%	9%	10%	9%	10%	9%
% Active	83%	82%	80%	80%	81%	83%	86%	85%
% Passive	17%	18%	20%	20%	19%	17%	14%	15%
% US	92%	89%	86%	86%	84%	82%	76%	76%
% Non-US	8%	12%	15%	15%	16%	19%	24%	25%

Implementation considerations

Potential allocation by fund – Aggressive model

	Aggressive							
	Inc	0-2.5 Yrs	2.5-5 Yrs	6-7.5 Yrs	7.5-10 Yrs	11-12.5 Yrs	12.5-15 Yrs	16+ Yrs
Stable Value Fund	24%	17%	17%	13%	10%	7%	5%	0%
Fixed Income Passive Fund	13%	12%	12%	10%	10%	6%	5%	0%
Fixed Income Fund	13%	12%	12%	10%	10%	5%	4%	0%
Large Cap Passive Fund	6%	7%	7%	7%	8%	8%	10%	11%
Large Cap Value Fund	3%	3%	3%	4%	3%	5%	5%	6%
Large Cap Growth Fund	3%	3%	3%	4%	3%	5%	5%	6%
Small/Mid Cap Passive Fund	0%	0%	0%	0%	0%	0%	0%	0%
Small/Mid Cap Value Fund	5%	6%	6%	7%	7%	9%	10%	11%
Small/Mid Cap Growth Fund	5%	6%	6%	7%	7%	9%	10%	11%
International Passive Fund	0%	0%	0%	0%	0%	0%	0%	0%
International Equity Fund	9%	8%	8%	9%	11%	12%	12%	15%
Global Equity Fund	9%	16%	16%	19%	23%	24%	25%	30%
Diversified Inflation Hedge Fund	10%	10%	10%	10%	8%	10%	9%	10%
% Active	81%	81%	81%	83%	82%	86%	85%	89%
% Passive	19%	19%	19%	17%	18%	14%	15%	11%
% US	87%	84%	84%	82%	78%	76%	76%	70%
% Non-US	13%	16%	16%	19%	23%	24%	25%	30%

Disclaimer



Disclaimer

Important notices

References to Mercer shall be construed to include Mercer LLC and/or its associated companies.

© 2013 Mercer LLC. All rights reserved.

This contains confidential and proprietary information of Mercer and is intended for the exclusive use of the parties to whom it was provided by Mercer. Its content may not be modified, sold or otherwise provided, in whole or in part, to any other person or entity, without Mercer's prior written permission.

The findings, ratings and/or opinions expressed herein are the intellectual property of Mercer and are subject to change without notice. They are not intended to convey any guarantees as to the future performance of the investment products, asset classes or capital markets discussed. Past performance does not guarantee future results. Mercer's ratings do not constitute individualized investment advice.

Information contained herein has been obtained from a range of third party sources. While the information is believed to be reliable, Mercer has not sought to verify it independently. As such, Mercer makes no representations or warranties as to the accuracy of the information presented and takes no responsibility or liability (including for indirect, consequential or incidental damages), for any error, omission or inaccuracy in the data supplied by any third party.

This does not constitute an offer or a solicitation of an offer to buy or sell securities, commodities and/or any other financial instruments or products or constitute a solicitation on behalf of any of the investment managers, their affiliates, products or strategies that Mercer may evaluate or recommend.

For the most recent approved ratings of an investment strategy, and a fuller explanation of their meanings, contact your Mercer representative.

For Mercer's conflict of interest disclosures, contact your Mercer representative or see www.mercer.com/conflictsofinterest.

Mercer universes: Mercer's universes are intended to provide collective samples of strategies that best allow for robust peer group comparisons over a chosen timeframe. Mercer does not assert that the peer groups are wholly representative of and applicable to all strategies available to investors.

The value of your investments can go down as well as up, and you may not get back the amount you have invested. Investments denominated in a foreign currency will fluctuate with the value of the currency. Certain investments, such as securities issued by small capitalization, foreign and emerging market issuers, real property, and illiquid, leveraged or high-yield funds, carry additional risks that should be considered before choosing an investment manager or making an investment decision.

Returns for periods greater than one year are annualized. Returns are calculated net of investment management fees, unless noted as gross of fees.

Style analysis graph time periods may differ reflecting the length of performance history available.

THE FOLLOWING PROVISIONS APPLY TO DATA OR OTHER SERVICES PROVIDED BY THE FOLLOWING COMPANIES: Where "End User" appears before the Vendor name, a direct end-user license with the Vendor is required to receive some indices. You are responsible for ensuring you have in place all such licenses as are required by Vendors.

BARCLAYS: © Barclays Bank PLC 2013. This data is provided by Barclays Bank PLC. Barclays Bank PLC and its affiliated companies accept no liability for the accuracy, timeliness or completeness of such data which is provided "as is." All warranties in relation to such data are hereby extended to the fullest extent permitted under applicable law.

BARCLAYS CAPITAL: The Barclays Indices are a proprietary product of Barclays. Barclays shall maintain exclusive ownership of and rights to the Barclays Indices and that inclusion of the Barclays Indices in this Service shall not be construed to vest in the subscriber any rights with respect to the Indices. The subscriber agrees that it will not remove any copyright notice or other notification or trade name or marks of Barclays that may appear in the Barclays Indices and that any reproduction and/or distribution of the Barclays Indices (if authorized) shall contain such notices and/or marks.

BLOOMBERG L.P.: © 2013 Bloomberg L.P. All rights reserved. BLOOMBERG, BLOOMBERG PROFESSIONAL, BLOOMBERG FINANCIAL MARKETS, BLOOMBERG NEWS, BLOOMBERG TRADEMARK, BLOOMBERG BONDTRADER, AND BLOOMBERG TELEVISION are trademarks and service marks of Bloomberg L.P. a Delaware Limited Partnership.

Disclaimer

Important notices

BNY Mellon Asset Servicing: Source: © 2013 BNY Mellon Performance Risk and Analytics, LLC. All Rights Reserved.

CITIGROUP GLOBAL MARKETS (formerly SALOMON SMITH BARNEY): Smith Barneysm and Citigroup Global Equity Indexsm are service marks of Citigroup Inc. "BECAUSE ACCURACY COUNTS®" is a registered service mark of Citigroup Inc. FloatWatch® is a trade mark of Citigroup Inc. Citigroup Global Equity Index Systemsm, Citigroup Broad Market Indexsm, Citigroup Primary Market Indexsm, Citigroup Extended Market Indexsm, Citigroup Cap-Range Indexsm, Citigroup Internet Index (NIX)sm, Citigroup Style Indices (Growth/Value)sm, Citigroup Property Indexsm are service marks of Citigroup Inc. ©2013 Citigroup Inc All rights reserved. Any unauthorized use, duplication or disclosure is prohibited by law and may result in prosecution. Citigroup, including its parent, subsidiaries and/or affiliates ("the Firm"), usually makes a market in the securities discussed or recommended in its report and may sell to or buy from customers, as principal, securities discussed or recommended in its report. The Firm or employees preparing its report may have a position in securities or options of any company discussed or recommended in its report. An employee of the Firm may be a director of a company discussed or recommended in its report. The Firm may perform or solicit investment banking or other services from any company discussed or recommended in its report. Securities recommended, offered, or sold by SSB: (i) are not insured by the Federal Deposit Insurance Corporation; (ii) are not deposits or other obligations of any insured depository institution (including Citibank); and (iii) are subject to investment risks, including the possible loss of the principal amount invested. Although information has been obtained from and is based upon sources SSB believes to be reliable, we do not guarantee its accuracy and it may be incomplete or condensed. All opinions and estimates constitute SSB's judgment as of the date of the report and are subject to change without notice. Its report is for informational purposes only and is not intended as an offer or solicitation for the purchase or sale of a security. Its report does not take into account the investment objectives or financial situation of any particular person. Investors should obtain advice based on their own individual circumstances before making an investment decision.

CREDIT SUISSE FIRST BOSTON LLC. (CSFB): Copyright © 1996 – 2013 Credit Suisse First Boston LLC and/or its affiliate companies. All rights reserved.

DataStream: Source: ThomsonReuters Datastream

Dow Jones: The Dow Jones IndexesSM are proprietary to and distributed by Dow Jones & Company, Inc. and have been licensed for use. All content of Dow Jones IndexesSM © 2013 is proprietary to Dow Jones & Company, Inc.

"End User" FTSE™: is a trade mark of the London Stock Exchange PLC and The Financial Times Limited and is used by FTSE International Limited under license. Russell Investment Group Europe Ltd is licensed by FTSE International Limited to distribute FTSE Advanced Service and other FTSE indices. FTSE shall not be responsible for any error or omission in FTSE data. All copyright and database rights in FTSE products belong to FTSE or its licensors. Redistribution of the data comprising the FTSE products is not permitted. You agree to comply with any restrictions or conditions imposed upon the use, access, or storage of the data as may be notified to you by FTSE or Russell/Mellon Europe Ltd. You are not permitted to receive the FTSE Advanced Service unless you have a separate agreement with FTSE. "FTSE™", "FT-SE™" and "Footsie™" are trade marks of London Stock Exchange PLC and The Financial Times Limited and are used by FTSE International Limited under license.

The FTSE Private Investor Indices are owned and calculated by FTSE International and are produced in association with APCIMS (Association of Private Client Investment Managers and Stockbrokers). © FTSE International Limited 2013

The UK Value and Growth Indices are owned and calculated by FTSE International Limited in association with Russell Investment Group. © FTSE International Limited 2013.

RUSSELL INVESTMENT GROUP: Russell Investment Group is the source and owner of certain of the data contained or reflected in this material and all trademarks and copyrights related thereto. The material may contain confidential information and unauthorized use, disclosure, copying, dissemination or redistribution is strictly prohibited. This is a user presentation of the data. Russell Investment Group is not responsible for the formatting or configuration of this material or for any inaccuracy in presentation thereof. Returns and security data for the Russell indices are provided by Mellon Analytical Solutions. Russell indices are trademarks/service marks of the Russell Investment Group. Russell® is a trademark of the Russell Investment Group.

HFR: Source: Hedge Fund Research, Inc., © HFR, Inc. 2013, www.hedgefundresearch.com

JPMORGAN: The JPMorgan EMBI Index (i) is protected by copyright and JPMorgan claims trade secret rights, (ii) is and shall remain the sole property of JPMorgan, and (iii) title and full ownership in the JPMorgan EMBI Index is reserved to and shall remain with JPMorgan. All proprietary and intellectual property rights of any nature, including patents, copyrights, trademarks and trade secrets regarding the JPMorgan EMBI Index, and any and all parts, copies, modifications, enhancements and derivative works are owned by, and shall remain the property of JPMorgan and its affiliates. The JPMorgan EMBI Index and related materials and software were developed, compiled, prepared and arranged by JPMorgan through expenditure of substantial time, effort and money and constitute valuable intellectual property and trade secrets of JPMorgan. The JPMorgan EMBI Index shall not be used in a manner that would infringe the property rights of JPMorgan or others or violate the laws, tariffs, or regulations of any country.

Disclaimer

Important notices

LIPPER: Performance data was supplied by Lipper, A Thomson Reuters Company, subject to the following: Copyright 2013 © Thomson Reuters. All rights reserved. Any copying, republication or redistribution of Lipper Information, including by caching, framing or similar means, is expressly prohibited without the prior written consent of Lipper. Lipper shall not be liable for any errors or delays in the Information, or for any actions taken in reliance thereon. Lipper performance data is total return, and is preliminary and subject to revision. The data contained herein has been obtained from company reports, financial reporting services, periodicals, and other resources believed to be reasonable. Although carefully verified, data on compilations is not guaranteed by Lipper Inc. - A Reuters Company and may be incomplete. No offer or solicitations to buy or sell any of the securities herein is being made by Lipper. Portions of the information contained in this report was derived by Mercer using Content supplied by Lipper, A Thomson Reuters Company.

MERRILL LYNCH: *The Merrill Lynch Indices are used with permission. Copyright 2013, Merrill Lynch, Pierce, Fenner & Smith Incorporated. All rights reserved. The Merrill Lynch Indices may not be copied, used, or distributed without Merrill Lynch's prior written approval.*

This Product is not sponsored, endorsed, sold or promoted by Merrill Lynch. Merrill Lynch makes no guarantees, representations or warranties of any kind, express or implied, to any person, including, without limitation, any member of the public regarding the use of the Indices in the Product, the advisability of investing in securities generally or of the ability of the Index to track any market performance. Merrill Lynch's only relationship to Mellon Analytical Solutions or any other person or entity in respect to this Product is limited to the licensing of the Merrill Lynch Indices, which are determined, composed, and calculated by Merrill Lynch without regard to Mellon Analytical Solutions or this Product. Merrill Lynch retains exclusive ownership of the Indices and the programs and trademarks used in connection with the Indices. Merrill Lynch has no obligation to take the needs of Mellon Analytical Solutions or the purchasers, investors or participants in the Product into consideration in determining, composing or calculating the Indices, nor shall Merrill Lynch have any obligation to continue to calculate or provide the Indices in the future. Merrill Lynch may, in its absolute discretion and without prior notice, revise or terminate the Indices at any time. **IN NO EVENT SHALL MERRILL LYNCH OR ANY OF ITS PARTNERS, AFFILIATES, EMPLOYEES, OFFICERS, DIRECTORS OR AGENTS HAVE ANY LIABILITY TO ANY PERSON OR ENTITY FOR ANY INDIRECT, PUNITIVE, SPECIAL, OR CONSEQUENTIAL DAMAGES, INCLUDING LOST PROFITS.**

MOODY'S INVESTORS SERVICE: Moody's © Copyright 2013, Moody's Investors Service, Inc. ("Moody's"). Moody's ratings ("Ratings") are proprietary to Moody's or its affiliates and are protected by copyright and other intellectual property laws. Ratings are licensed to Distributor by Moody's. **RATINGS MAY NOT BE COPIED OR OTHERWISE REPRODUCED, REPACKAGED, FURTHER TRANSMITTED, TRANSFERRED, DISSEMINATED, REDISTRIBUTED OR RESOLD, OR STORED FOR SUBSEQUENT USE FOR ANY SUCH PURPOSE, IN WHOLE OR IN PART, IN ANY FORM OR MANNER OR BY ANY MEANS WHATSOEVER, BY ANY PERSON WITHOUT MOODY'S PRIOR WRITTEN CONSENT.** Moody's® is a registered trademark of Moody's Investors Service, Inc.

MSCI®: Portions of this report are copyright MSCI 2013. Unpublished. All Rights Reserved. This information may only be used for your internal use, may not be reproduced or disseminated in any form and may not be used to create any financial instruments or products or any indices. This information is provided on an "as is" basis and the user of this information assumes the entire risk of any use it may make or permit to be made of this information. Neither MSCI, any of its affiliates or any other person involved in or related to compiling, computing or creating this information makes any express or implied warranties or representations with respect to such information or the results to be obtained by the use thereof, and MSCI, its affiliates and each such other person hereby expressly disclaim all warranties (including, without limitation, all warranties of originality, accuracy, completeness, timeliness, non-infringement, merchantability and fitness for a particular purpose) with respect to this information. Without limiting any of the foregoing, in no event shall MSCI, any of its affiliates or any other person involved in or related to compiling, computing or creating this information have any liability for any direct, indirect, special, incidental, punitive, consequential or any other damages (including, without limitation, lost profits) even if notified of, or if it might otherwise have anticipated, the possibility of such damages. MSCI is a registered trademark of MSCI, Inc.

NAREIT®: NAREIT® is the exclusive registered mark of the National Association of Real Estate Investment Trusts.

NCREIF: All NCREIF Data - Copyright by the National Council of Real Estate Investment Fiduciaries. This information is proprietary and may not be reported in whole or in part without written permission.

STANDARD & POOR'S: Standard & Poor's information contained in this document is subject to change without notice. Standard & Poor's cannot guarantee the accuracy, adequacy or completeness of the information and is not responsible for any errors or omissions or for results obtained from use of such information. Standard & Poor's makes no warranties or merchantability or fitness for a particular purpose. In no event shall Standard & Poor's be liable for direct, indirect or incidental, special or consequential damages from the information here regardless or whether such damages were foreseen or unforeseen.

WILSHIRE ASSOCIATES: Copyright © 2013 Wilshire Associates Incorporated.



Services provided by Mercer Investment Consulting, Inc.